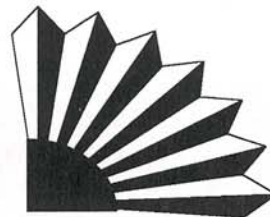
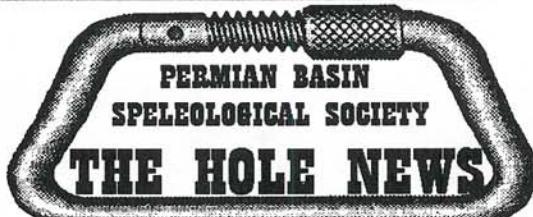
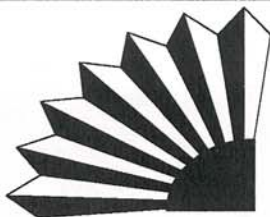


# THE HOFFNEWS

MARCH

1996





March 1996

Chartered 1984 as the 300th Grotto of the National Speleological Society

Volume 11 Number 13

THE MONTHLY PUBLICATION OF THE PERMIAN BASIN SPELEOLOGICAL SOCIETY

*"The Hole News"* is edited on 80486 25 MHz IBM personal computer utilizing Microsoft Publisher Version 2.0 desktop publishing program. The editor will accept modem transfer (14.4kb N81) or 5 1/4 and 3 1/2 floppy disks with \*.txt, .pub, .rtf, .doc, .wps, and .wri formats for trip reports and \*.bmp, .pcx, .tif, .pcd, .gif, .tga, .clp, .cut, .dib, .iff, .img, .jas, .jif, .jpg, .lbm, .mac, .msp, .pic, .rle, .wmf, .wpg, and .cdr formats for graphics. However typed or handwritten submissions as well as hand drawn graphics are also welcome. All are greatly appreciated. Contact the editor @ 915-559-3297.

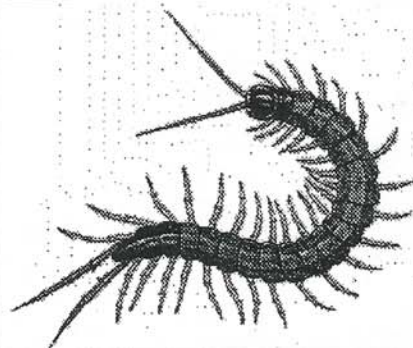


*"The Hole News"* is the monthly publication of the Permian Basin Speleological Society. Articles and cartoons maybe reproduced by cave oriented publications that exchange newsletters with PBSS, as long as proper credit is given to the author. Items for this newsletter can be sent to the Chief Editor, *"The Hole News"*, c/o Walter Feaster 4307 Harvard Ave., Midland, Texas 79703-4847. Regular membership dues are only \$10.00 and includes one voting right, associate membership is \$ 5.00 and does not include a newsletter. Dues should be sent to PBSS Treasurer /Secretary c/o Walter Feaster, 4307 Harvard, Midland, Texas 79703. If you're interested in caving or even if you think you might like to try it, then contact Noel Pando at (915)-523-9294. Or if you are not from this area and some how through circumstances beyond you're control or ours found a copy of *"The Hole News"* then you should contact the National Speleological Society at 2813 Cave Avenue, Huntsville Alabama, 35810-4431.

**Next Meeting: PBSS**

The next official meeting of the Permian Basin Speleological Society will be on Tuesday, March 12, 1996 at 7:00 PM in the back meeting room at Murry's Delicatessen which is located at 3211 West Wadley in Midland, Texas. If you need directions or more information call our official contact person Walter Feaster @ 915 559-3297. The meeting starts about 7:00 PM or thereabouts, eating and caver style socializing usually begins at 6:30 PM and is optional. Topic of discussion will be a possible trip to Montgomery's Cave.

**Bug of the Month:**



\*\*\*\*\*On the Cover:\*\*\*\*\*

This is Natural Bridge Caverns again. There is no description of what this formation is or where it is in the cave. Again this photo is from the Corel Professional Photos cd rom. For technical reasons I had to use another picture from Natural Bridge Caverns, in other words it fits.

## Future Cave Trips: Also other events from PBSS and other grottos.

- March ?? Montgomery's Cave. Trip date to be announced. Contact: Noel Pando @ 915-523-9294,\*\*\*\*\*
- April 5-7 SWR (Easter) Regional. At Freezeout Canyon (south of Hope, NM). Contact: Belski @ 505-885-6168.
- April 5-7 Restoration Trip to the Guads. Caves to be worked in are, Hidden, Black, and Cottonwood Cave. More info. contact Susan Herpin @ 713-939-7265.
- April 20-21 SWR GYPKAP Project. Vasco Bonita? Contact: S. Peerman @ 505-523-2167.
- April 27 TSS Technical Workshop. Contact: Bill Elliott @ (D) 512-475-8802 or (N) 512-835-2213, and E-Mail-welliott@utexas.edu
- May 3-5 TSA Convention. Location to be announced later. They need volunteers to help with everything. Contact: Dave McClung or Barbe Barker @ 214-594-1183.
- May 24-27 Caving at Camp Wood, TX. Fun caving, surveying, exploring, and more. Contact: Tom Kaler @ 817-725-7583, Pat Copeland @ 915-643-2952, or Mike Walsh @ 210-629-2169.
- May 25-27 SWR Memorial Day Regional. @ Pinon Cave (near Cloudcroft, NM) contact: Chris or Joli Lee @ 505-434-6604.
- May 24-27 Memorial Day. 0-9 Well If you are planning on going please contact Walter Feaster @ 915-559-3297, or write to-4307 Harvard Ave, Midland, TX 79703-4847-71.
- June 17-22 CRF/NSS Carlsbad Caverns Restoration Field Camp. It cost \$50 for the week. Contact Mike Mansur @ 505-299-8283, or send your money to 8028 Bellamah NE, Albuquerque, NM 87110.
- August 3-9, 1996-NSS Convention, Salida, Colorado. NSS Convention Committee, c/o Skip Withrow, 5404 South Walden, St. Aurora, CO. 80015, (303)693-0997

Most all of this material was stolen from various and sometimes reliable caving newsletters in the Southwestern Region and surrounding area, including the TSA's "Activities Newsletter"

\*\*\*\*\* Denotes a PBSS club Trip...

Madonna Survey Trips, contact: Mike Huber @ 505-887-6065

Carlsbat Cavers, contact Phyllis Weston @ 505-887-6790 for restoration educational programs, off trail trips.

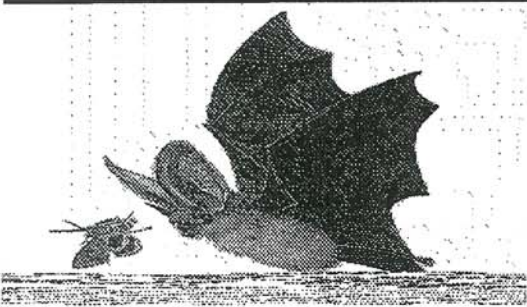
Honey Creek, contact: Mark Minton @ 512-847-3829

**IF YOU HAVE ANY CAVING TRIPS PLANNED, PLEASE LET THE EDITOR KNOW AND HE WILL PUBLISH THEM HERE IN THIS SPACE!.....**

### B. C. I. Acquires Web Site.

Attention all you Cyber-Cavers. B.C.I. (Bat Conservation International) has a new World Wide Web site at, <http://www.batcon.org/>. You'll find catalogue items, bat and bat house information, reading list, and more. BCI produces a fine magazine and for a good cause. Check it out.

As for bats, I like to think of them as fellow cavers. They hang around in caves all day, eat and party all night. I could do that.



### Amazing Maze Up Date

The gate at Amazing Maze Cave is now repaired. A skilled welder friend of mine and myself journeyed down to AM Cave the very cold morning of February 4, the weekend of the Texas blizzard of 96.

It was cold, this is why we only took one six pack of beer. Any way we installed a metal plate over the gate to cover the bars. Covering the bars hopefully will prevent the vandals having anything to grab a hold of, to pop the gate open.

We are still considering other options to prevent future break-ins. Right now A.M. cave is closed for the lambing season in that area. Submitted by Walter Feaster NSS#31624

### Texas and Mexico Cave Rescue

**Call Collect 210-686-0234**

This is Kriedler Funeral Home's 24 Hour number  
Ask for "Cave Rescue" and "John Kriedler"

**In New Mexico Dial 911**

---

**TRIP REPORTS:** and other lies and stories

---

**Kickapoo Caverns Trip Feb. 4, 1996**

**Cave:** Kickapoo Caverns, Edwards County, Texas

**Cavers:** David Stuart, Ruel Metcalf, Kimberly Sellon of New York, Rebecca Lee.

This was a spur of the moment trip and with very little planning, it is amazing it was such a success. Ruel and I hopped into a borrowed Ford Explorer early Sunday morning and set out on the four hour drive south. Neither of us knew about Kickapoo Caverns so our expectations were low.

Deeper into our drive and dodging dancing deer and wild turkeys, the view was getting interesting. On rural route 674, the mountains are fantastic. We finally found the Kickapoo Caverns sign and were soon met by our fellow cavers. Kimberly was on her way to Seattle from New York but as the weather worsened she was forced to drive south to avoid it. In her travels, she found herself at Kickapoo where she met with the ranger David Stuart who led us through the cave. Earlier that day Kimberly and David visited Devil's Sinkhole.

After a rough and rocky 1 1/2 mile drive, we parked, signed a release, and hiked uphill to the natural entrance of the cave. It was seemingly buried beneath a tree and would have blended in nicely with the terrain were it not for the huge metal gate over it. We climbed in and were met by an incredible vastness. This cave is huge! Inside, the temperature is 69 degrees Fahrenheit. A welcome release from the chill outside.

As we carefully stepped on and over the rubble of limestone and broken stalactites, David spoke of the history and mystery of the cavern. We were pleasantly informed on the cave biology, a special interest of his. Deeper in, we came upon the biggest column Ruel and I have ever seen. As we gawked and stared in amazement, David calmly said in the background, "That's the small one." Seeing these great columns alone was worth the four hour drive. But, there was more.

We saw and climbed around an assortment of stalactites, stalagmites, columns, helictites, flowstone, and cave pools. There is a great deal more activity in this cave than we ever expected. At one point, we saw a stalactite dripping continuously. It was dripping so fast that it was not forming a stalagmite beneath it. The drips were just hitting the floor and running off into the cave.

We also saw a sad but intriguing part of the cave's history, the graffiti. But, it was antique graffiti dating back to the 1800's. It seemed everyone in Texas left a mark between 1880 and 1960. Also, many formations were damaged. Thrown rocks were wedged in the cave walls and broken stalactites lie on the floor like dead soldiers. This cave is obviously sacrificed to those who have to see inside.

David graciously gave us three hours of climbing, gawking, feeling, and hearing the great wonders of Kickapoo Caverns. I know Ruel and I were definitely surprised and pleased with what we saw. It was seeing the massive columns that really set this trip aside for us. We climbed out of the cave into the winter we left behind, hiked downhill to our cars, exchanged thank you's and other words, and set off on our four hour drive to Midland.

No, there was no rappelling, chimneying, or crawling through tight passages and we did not even get to use our helmets. The only gear we needed was our trusty and not so trusty flashlights. That was fine. It was still exciting, adventurous, and even a little dirty. This trip was a lot of fun and Ruel and I want to thank David Stuart most of all for allowing us to visit and generously guiding us through this wonderful Kickapoo Caverns.

Submitted by Rebecca Lee NSS# 42075

---

## More Trip Reports:

### Slaughter Canyon Cave and Spider Cave Feb. 24-25, 1996

Cave: Slaughter Canyon Cave and Spider Cave, Carlsbad Caverns National Park, N. M.

PBSS Cavers: Ruel Metcalf and Rebecca Lee.

This was our first visit to the New Cave. The half mile, 500 foot hike to the entrance was well worth it. The Christmas tree formation being the high light of the tour is spectacular. But, I was pleased to add the two shields adjacent to the Christmas tree to my list of "Formations seen." Overall it was a good tour as tourist caves go.

The formations in Spider cave get prettier every time we see them. This was our second time. The Mace, Medusa, and Cactus spring rooms are outstanding. Of course, we traversed the Grand Canyon again with a little more confidence and experience than the first time we visited Spider. The low entrance and the water line in the Mace Room got us thinking anxiously about the looming dark clouds outside. But our minds soon drifted from those and we wallowed happily in the dust and mud of Spider Cave.

**Footnote:** Before we toured Spider Cave Sunday afternoon, we hiked up a treacherous trail in Slaughter Canyon that a Park Ranger said led to Ogle Cave. After getting on and off the trail a few times in our search for Ogle, we happened upon it. Ruel and I both agree-yep, it is a big hole all right.

Submitted by Rebecca Lee NSS# 42075

**From the editor:** Well that wasn't so hard to do. Two trip reports from the same person. To make it even easier, below is an E-Z trip report form I acquired from the North Texas grotto, who took it from the Maverick grotto. Then I modified it.

### E-Z Trip Report for the Trip Report Impaired

Name:(Nickname or alias will do) \_\_\_\_\_

Name of cave: \_\_\_\_\_ Location:(Try to keep it in the right time zone) \_\_\_\_\_

Type of cave:     Horizontal (Walk in or crawl in)     Vertical (It goes up and down)     Dark

Date: (No star dates) \_\_\_\_\_

Were other cavers on this trip?     Yes     No     Don't know

Weather?     Sunny     Cloudy     Rainy     Snowing     Don't know

Did this trip involve camping?     Yes     No     Don't know

Temperature?     Hot     Cold     Don't know

Was there a campfire party?     Yes     No     Don't know

Do you remember it?     Yes     No     I fell in the campfire

More details:(We will accept articles written in crayon.) \_\_\_\_\_

\_\_\_\_\_

\_\_\_\_\_

\_\_\_\_\_

\_\_\_\_\_

\_\_\_\_\_

\_\_\_\_\_

The Permian Basin Speleological Society  
c/o Walter Feaster  
4307 Harvard Ave.  
Midland, The Republic of Texas 79703 4847 71



**BILL BENTLEY & DONNIE**  
**400 EASTWOOD DR**  
**MIDLAND TX 79703 5308**

